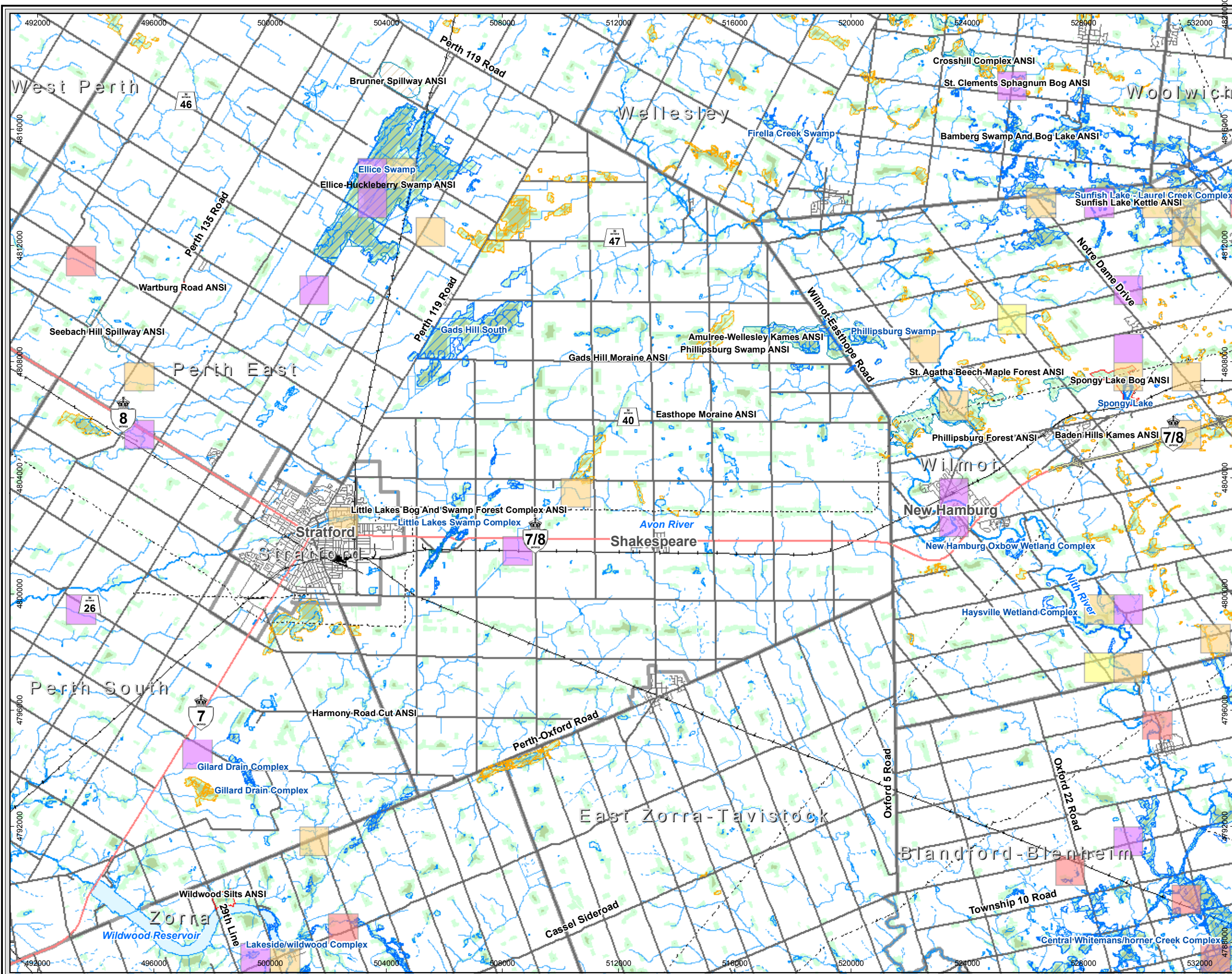


Map Document: N:\Projects\0071703472007\Final\GIS\Spatial\Map\Report\Map\03472007\SignificantNaturalHeritageResources-1x17.mxd  
 6/14/2007 1:41:18 PM



**Legend**

- Intermittent Stream
- Permanent Stream
- Transmission Line
- Railway
- Freeway
- Highway
- Major Road
- Local Road
- ▭ Municipal Division
- ▭ Wooded Area
- ▭ Core Area
- ▭ Provincially Significant Life Science ANSI
- ▭ Regionally Significant Life Science ANSI
- ▭ Provincially Significant Earth Science ANSI
- ▭ Regionally Significant Earth Science ANSI
- ▭ Provincially Significant Wetland
- ▭ Locally Significant Wetland
- ▭ Waterbody
- ▭ Cartographic Wetland

**NHIC Rare Species**

**COSEWIC Category**

- ▭ Endangered
- ▭ Threatened
- ▭ Special Concern

**OMNR S-Rank**

- ▭ S1, S2 or S3

Basemapping from Ontario Ministry of Natural Resources

Km  
0 0.5 1 2 3 4 5  
1:125,000  
UTM Zone 17N, NAD 83

Highway 7/8 Transportation  
 Corridor Planning  
 and Class EA Study

**Significant Natural  
 Heritage Resources**

June 2007  
 Project 70347

Ontario  
 Gartner Lee

Exhibit 3.2