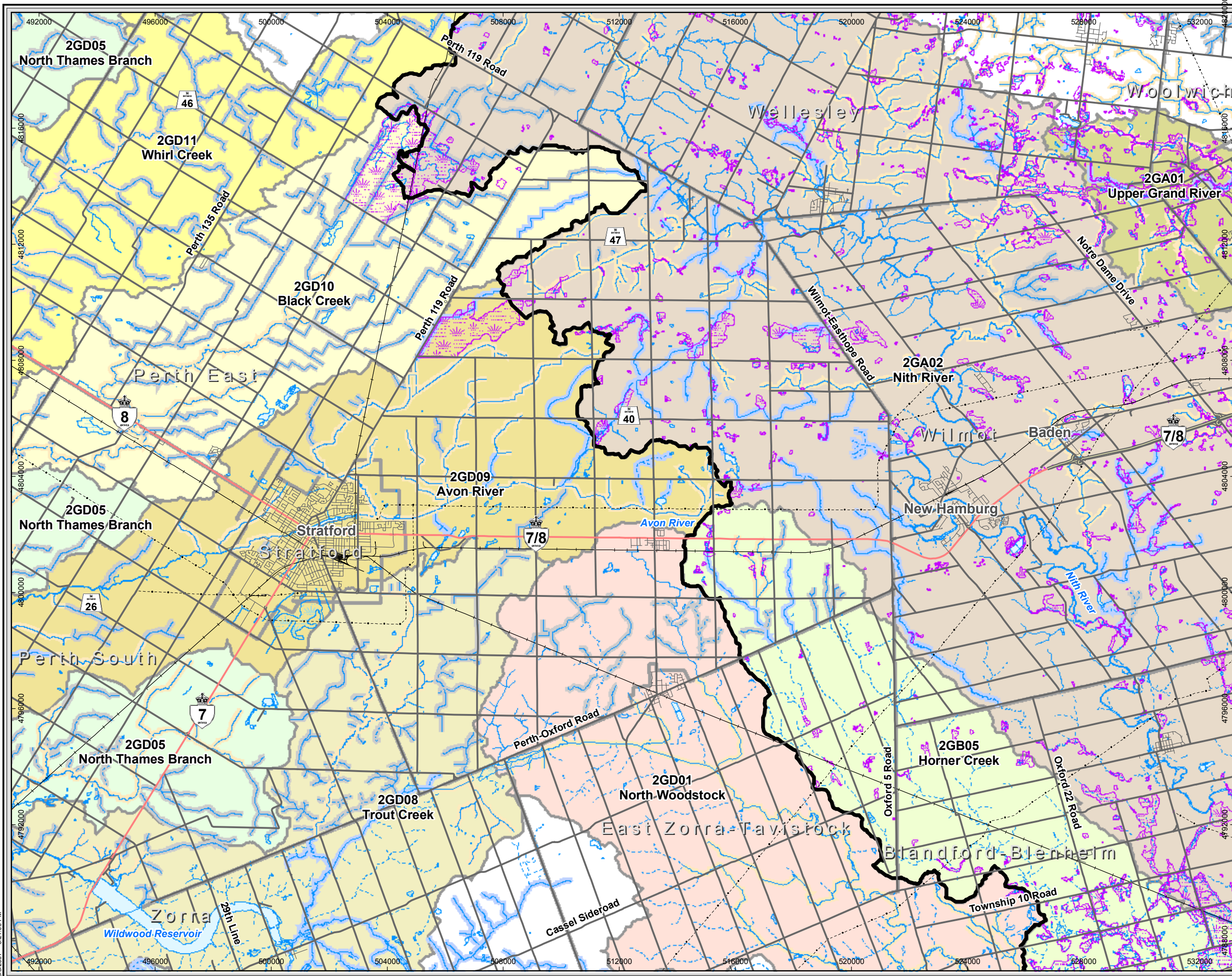


Map Document: (N:\Projects\007170347\2007\Final\GIS\Spatial\Map\Report\MKDs\70347\AquaticResources-11x17.mxd)
6/8/2007 3:21:00 PM



Legend

- Transmission Line
- Railway
- Freeway
- Highway
- Major Road
- Local Road
- Municipal Division
- GRCA Wetland
- Waterbody
- Cartographic Wetland

Stream Type & Thermal Assessment

- Intermittent, Coldwater
- Intermittent, Coolwater
- Intermittent, Warmwater
- Intermittent, Unassigned
- Intermittent, No data
- Permanent, Coldwater
- Permanent, Coolwater
- Permanent, Warmwater
- Permanent, Unassigned
- Permanent, No data

Quaternary Watersheds

02GA Grand River

- 2GA01 Upper Grand River
- 2GA02 Nith River
- 2GB05 Horner Creek

02GD Thames River

- 2GD01 North Woodstock
- 2GD05 North Thames Branch
- 2GD08 Trout Creek
- 2GD09 Avon River
- 2GD10 Black Creek
- 2GD11 Whirl Creek

Basemapping from Ontario Ministry of Natural Resources

Km
0 0.5 1 2 3 4 5
1:125,000
UTM Zone 17N, NAD 83

Highway 7/8 Transportation Corridor Planning and Class EA Study

Aquatic Resources

June 2007
Project 70347

Ontario
Gartner Lee

Exhibit 3.1
TH engineers architects planners